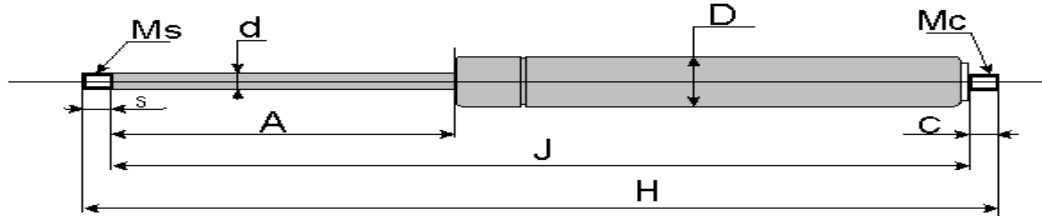




## Stainless Steel Gas Springs with Threaded Ends



### Featur & Benefits.

- \*316 Stainless Steel Tube and Rod
- \*End of Travel Dampening
- \*Multiple end fitting choices

- \*Orbital riveted piston assy.
- \*Selection of Force rating
- \*Corrosion Resistance

#### INCH DIMENSIONS

Gas Spring P/N	Rod Dia.: (d)	Cyl. Dia.: (D)	Stroke: (A)	Shoulder Length (J)	Ext. Lgth: (H)	Rod Thd: (Ms)	Rod thd lgth: (S)	Body thd: (Mc)	Body thd lgth: (C)	Force (Lbs.)
<b>66F060150TT****</b>	<b>.236</b>	<b>.590</b>	<b>2.4</b>	<b>5.90</b>	<b>6.60</b>	<b>M6 x 1</b>	<b>0.354</b>	<b>M6 x 1</b>	<b>0.354</b>	<b>10 to 90 Lbs.</b>
<b>66F090207TT****</b>	<b>.236</b>	<b>.590</b>	<b>3.5</b>	<b>8.15</b>	<b>8.85</b>	<b>M6 x 1</b>	<b>0.354</b>	<b>M6 x 1</b>	<b>0.354</b>	<b>10 to 90 Lbs.</b>
66F100240TT****	.236	.590	3.9	9.44	10.14	M6 x 1	0.354	M6 x 1	0.354	10 to 90 Lbs.
66F150340TT****	.236	.590	5.9	13.38	14.08	M6 x 1	0.354	M6 x 1	0.354	10 to 90 Lbs.
66F200440TT****	.236	.590	7.9	17.32	18.02	M6 x 1	0.354	M6 x 1	0.354	10 to 90 Lbs.
<b>89F050140TT****</b>	<b>.236</b>	<b>.590</b>	<b>1.97</b>	<b>5.51</b>	<b>6.29</b>	<b>M6 x 1</b>	<b>0.394</b>	<b>M6 x 1</b>	<b>0.394</b>	<b>10 to 150 Lbs.</b>
<b>89F080212TT****</b>	<b>.314</b>	<b>.748</b>	<b>3.15</b>	<b>8.35</b>	<b>9.14</b>	<b>M6 x 1</b>	<b>0.394</b>	<b>M6 x 1</b>	<b>0.394</b>	<b>10 to 160 Lbs.</b>
89F100250TT****	.314	.748	3.9	9.84	10.63	M6 x 1	0.394	M6 x 1	0.394	10 to 160 Lbs.
89F150350TT****	.314	.708	5.9	13.78	14.56	M6 x 1	0.394	M6 x 1	0.394	10 to 150 Lbs.
89F200450TT****	.314	.708	7.9	17.71	18.49	M6 x 1	0.394	M6 x 1	0.394	10 to 150 Lbs.
89F250550TT****	.314	.748	9.8	21.65	22.44	M6 x 1	0.394	M6 x 1	0.394	10 to 160 Lbs.
15F100260TT****	.393	.866	3.9	10.24	11.18	M8x1.25	0.472	M8x1.25	0.472	20 to 250 Lbs.
15F200460TT****	.393	.866	7.9	18.11	19.05	M8x1.25	0.472	M8x1.25	0.472	20 to 250 Lbs.
15F250560TT****	.393	.866	9.8	22.04	22.99	M8x1.25	0.472	M8x1.25	0.472	20 to 250 Lbs.
15F300660TT****	.393	.866	11.8	25.98	26.92	M8x1.25	0.472	M8x1.25	0.472	20 to 250 Lbs.
15F400860TT****	.393	.866	15.7	33.85	34.80	M8x1.25	0.472	M8x1.25	0.472	20 to 250 Lbs.
51F200480TT****	.550	1.10	7.9	18.89	19.83	M10x1.5	0.472	M10x1.5	0.472	50 to 562 Lbs
51F300680TT****	.550	1.10	11.8	26.77	27.71	M10x1.5	0.472	M10x1.5	0.472	50 to 562 Lbs
51F400880TT****	.550	1.10	15.7	34.64	35.58	M10x1.5	0.472	M10x1.5	0.472	50 to 562 Lbs
51F500A80TT****	.550	1.10	19.68	42.52	43.46	M10x1.5	0.472	M10x1.5	0.472	50 to 562 Lbs

\*\*\*\* 4 digit code which references the force in Newtons (lbs. x 4.448 =Newtons)

Example: 150 lbs. force = 667 Newtons or P/N suffix "0667"

P/N 89F150350TT0667 = .314" Rod x 5.9" stroke, threaded ends & 150 lbs. of force

See end fitting section for available end fitting options

\*Stock Items In Bold

**For the SOLUTION TO YOUR GAS SPRING NEEDS**

**1 - 800 - 214 - 7034**